



(사)대한회전기계엔지니어협회
KOREA ROTATING MACHINERY ENGINEERS ASSOCIATION

2024 KOREA 회전기계 심포지엄

The 23rd Korea Rotating Machinery Symposium

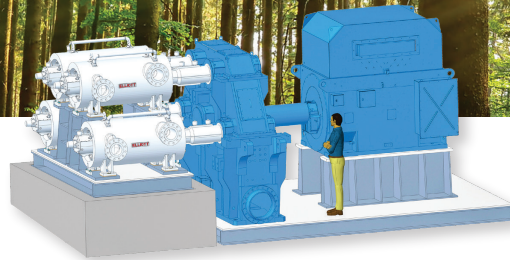
2024. 11. 14 [Thu] - 15 [Fri]

PROGRAM BOOK



Your Best Solution Provider in the Energy Sector

Leading Sustainability Efforts Worldwide



Flex-Op® Solution for Hydrogen Compression



Learn more at www.elliott-turbo.com



EBARA ELLIOTT ENERGY

COMPRESSORS | STEAM TURBINES | PUMPS | GLOBAL SERVICE

최고의 기술력을 바탕으로 최상의 가치를 실현하는

동양화공기계

동양화공기계의 기술력이 빛어낸 최고의 제품과 서비스,
그것으로 구현되는 고객의 가치 창출이 더욱 더 빛이 납니다.
철저하게 고객을 중심으로 성장해오며 국내외 시장에서 각광받고 있는
동양화공기계는 플랜트 산업에 널리 쓰이는 펌프 분야에서
세계적 수준의 경쟁력을 갖추고 최상의 제품·서비스를 제공하고 있습니다.
동양화공기계는 고객의 가치 창출을 높이기 위해 깊이 있고
차별화된 기술력의 향상을 끊임없이 추구합니다.



목 차

초대의 글	4
KRMEA 임원 소개	6
23회 KOREA 회전기계 심포지엄	
등록 안내	12
심포지엄 프로그램	14
주제발표 일정	16
전시 안내	24
전시업체소개	25
연회 및 숙박안내	55
개최 장소 및 교통편	57
공식후원사 및 협찬사	59
24회 KOREA 회전기계 심포지엄	
Call for Paper	82

TABLE OF CONTENTS

Invitation Letter	5
Board of Directors of KRMEA	8
The 23rd Korea Rotating Machinery Symposium	
Registration	13
Symposium Program	15
Technical Presentation Schedules	16
Exhibition Overview	24
Exhibitor's Descriptions	25
Banquet and Accommodation	56
Venue and Transportations	58
Official Sponsors and Supporters	59
The 24th Korea Rotating Machinery Symposium	
Call for Paper	83



초대의 글

대한회전기계협회 회원 여러분, 안녕하십니까?

2024 KOREA 회전기계 심포지엄에 초대하게 되어 매우 기쁘게 생각합니다.

작년 심포지엄의 성공적인 개최 이래, 올해에도 다시금 회원 여러분들을 만나뵙게 되어 매우 기쁘게 생각합니다.

본 심포지엄은 회전기계 업무에 종사하는 산업계, 학계 관련자들이 모여 정보 및 문제 해결 사례, 신기술 개발 및 적용 등 실질적이고 생생한 정보를 교환하고 나누는 자리입니다.



우리가 직면한 경제 상황은 미국을 중심으로 완만한 경제 성장세를 보이고 있으나, 중동 지역의 지정학적 긴장 확대로 물가 상승과 경제 회복세 하락 및 전 세계적 보호무역주의 확대로 인한 수출 감소 등 대내외적 불확실성은 지속되고 있어 부정적 경기 전망이 다수 제기되는 상황입니다. 세계적으로 경쟁력을 확보하고 있는 우리나라 정유 석유화학 업계도 앞으로의 전망을 관망하며 많은 대비를 진행해야 할 때입니다.

이런 상황에서 생산의 간간을 이루는 설비인 회전기계의 신뢰도 향상과 가동 역량 제고, 효율화는 기업의 경쟁력을 가르는 주요한 요소가 될 것입니다. 또한 ESG 경영이 선택사항이 아닌 기업의 지속 성장에 사활이 걸린 상황에서 환경친화적으로 회전기계를 제조하고 운영해야 하는 도전에 직면하고 있습니다.

우리 회전기계업계 종사하는 여러분들은 위기 속에서 과거의 성공 방식에 집착하지 않는 혁신적 사고로 차별화된 서비스, 운영 능력, 친환경 제품 개발 능력을 확보하여 새로운 도약을 준비해야 할 시기라고 생각합니다.

이번 심포지엄에서는 많은 변화가 준비되어 있습니다. 서울이 아닌 석유화학 업계의 중심지인 여수에서 개최되며, 총 27개의 주제 발표와 27개 업체의 전시부스를 마련하는 등 심포지엄의 질적, 양적인 면에서 전년도 보다 크게 확대된 심포지엄을 제공할 수 있도록 준비하고 있습니다.

2024 KOREA 회전기계 심포지엄에 부디 참석하셔서 깊이 있는 토론과 현장에서의 경험을 나누는 유익한 시간이 되시기를 바랍니다.

감사합니다.

대한회전기계엔지니어협회장 김재윤

Invitation Letter

Dear Members of the Korea Rotating Machinery Engineers Association (KRMEA),

I am delighted to extend an invitation to you for the 2024 KOREA Rotating Machinery Symposium. Following the successful symposium last year, it brings me great pleasure to once again meet with our esteemed members this year.

This symposium serves as a vital forum where professionals from industry and academia involved in rotating machinery can come together to exchange and share practical, real-world information, including case studies on maintenance, troubleshooting, and the development and application of new technologies.

While the global economy shows modest growth, especially centered around the United States, concerns about rising inflation and economic downturns persist due to geopolitical tensions in the Middle East. Moreover, global uncertainties such as the rise of protectionism and a reduction in exports continue to cast a shadow over the economic outlook. Even Korea's refining and petrochemical industries, which are globally competitive, must be well-prepared for the uncertain road ahead.

In these challenging times, improving the reliability, operational capacity, and efficiency of rotating machinery—critical to the foundation of production—will be key to maintaining a company's competitiveness. Additionally, as ESG management becomes an essential factor for a company's sustainable growth rather than an option, we are also faced with the challenge of manufacturing and operating rotating machinery in an environmentally responsible manner.

I believe this is a pivotal moment for those of you working in the rotating machinery sector to embrace innovative thinking and not rely on past successes. It is time to differentiate through superior services, operational capabilities, and the development of eco-friendly products, preparing for a new leap forward.

This year's symposium will feature significant changes. In this time, the symposium will be held in Yeosu, a hub of the petrochemical industry, rather than in Seoul. With 27 topics, 27 exhibition booths from participating companies, we have worked hard to ensure that this year's symposium will be larger and of higher quality compared to last year.

We sincerely hope that you will join us at the 2024 KOREA Rotating Machinery Symposium, where you will have the opportunity to engage in in-depth discussions and share valuable on-site experiences.

Thank you for your continued support.

Korea Rotating Machinery Engineers Association
President, Jae Youn Kim

(사)대한회전기계엔지니어협회 임원 소개

회장	김재운	Binh Son Refinery 울산과학대 국제교류어학원	O&M설비본부장 특임교수
부회장	정주택	(주)인페이스	대표이사
고문	이안성	한국기계연구원	박사 / 초대 회장
	이재옥	(주)태산로테이트먼트	회장 / 2대 회장
	홍범희	케이앤이	대표이사 / 3대 회장
	하기영	(주)동양항공기계	회장
	김용인	하이테크 엔지니어링	전무
	박영수	PORAN CVS	대표이사
	한영수	한국셀마스타(주)	고문
	안트 피츠	노이만에세	대표이사
	전기우	한화토탈에너지스	전무
	봉석근	(주)로텍로테이트먼트	전무
김범수	SK Energy	실장	

이사

김대성	SK 에코플랜트	AI DC 서비스 부사장
김규은	에스-오일(주)	팀장
SteveRyder	이글버그만코리아	대표이사
양진석	GS칼텍스(주)	팀장
안병학	한나래인터내셔널	대표이사
조문식	한국셀마스타(주)	상무
최진호	한화토탈에너지스	팀장
장석권	현대오일뱅크	팀장
이상주	SK Energy	팀장
최유신	YNCC	부장
류길수	한전KPS(주)	처장/수석전문원
하운상	(주)동양항공기계	부사장
김승철	LG화학(대산)	팀장
양동현	LG화학(여수)	팀장
고승판	(주)태산로테이트먼트	대표이사
박진의	롯데케미칼	부문장
강신훈	에스-오일(주)	부장
김수곤	하이파워텍주식회사	대표이사

감사

BOARD OF DIRECTORS OF KRMEA

President	Jae Youn Kim	Binh Son Refinery Institute of Global Business, University College of Ulsan	O&M Maintenance Deputy Director Adjunct Professor
Vice President	Ju-Taek Chung	InFaith	President
Advisers	An Sung Lee	KIMM	Dr. / 1st President
	Jae-Ok Lee	TAESAN Rotatment	Chairman / 2nd President
	Peom-Hee Hong	KNE	President / 3rd President
	Gi-Young Ha	Dongyang Chemical Pump	Chairman
	Yong-In Kim	HI-TECH Engineering	Executive Director
	Yeong-Su Park	PORAN CVS	President
	Young-Soo Han	Flowserve KSM	Advisor
	Arnd Viets	Neuman & Esser South Asia Ltd.	President
	Ki-Woo Jun	Hanwha Total Petrochemical	Executive Vice President
	Suk-Keun Bong	Rotech rotatment	Executive Vice President
	Bum-Su Kim	SK Energy	Vice President

Directors	Dae-Seong Kim	SKecoplant	AI DC Service Vice President
	Kye-Eun Kim	S-Oil corporation	Team Leader
	Steve Ryder	Eagleburgmann Korea	Managing Director
	Jin-Seok Yang	GS Caltex	Team Leader
	Byung-Hak Ahn	Hannarae International Co.,Ltd	President
	Mun-Sik Cho	Flowserve KSM	Managing Director
	Jin-Ho Choe	Hanwha Total Petrochemical	Team Leader
	Seok-Kwon Jang	Hyundai Oilbank	Team Leader
	Sang-Joo Lee	SK Energy	Team Leader
	Yu-Sin Choi	YNCC	General Manager
	KilSu Ryu	KEPCO KPS	Vice President
	Yoon-Sang Ha	Dongyang Chemical Pump	Vice President
	Seung-Chul Kim	LG chemical	Team Leader
	Dong-Hyun Yang	LG chemical	Team Leader
	Seung-Pan Ko	Taesan Rotatment	President
	Jin-Ui Park	Lotte Chemical	Head of Department
	Shin-Hun Kang	S-Oil corporation	General Manager
Auditor	Soo-Kon Kim	HIGH POWER TECHNICAL CO.,LTD	President

핵심가치



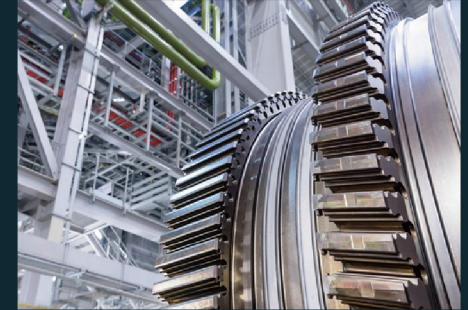
당신의 행복이
태산의 원동력입니다.

Taesan is powered
by your happiness



One partner across critical rotating assets

Our customers are facing a challenging future. They want a flexible and viable partner to support them in a world of changing expectations.



EthosEnergy turns on potential to deliver services and solutions globally for rotating equipment to make energy affordable, available and sustainable.

A unique combination of partnership and service quality, backed by a proven track record of operations, maintenance, engineered solutions and asset optimization.

With experience in over 100 countries, EthosEnergy works with customers to provide competitive reliability, improve performance and reduce total cost of ownership across the value chain.

Key facts:

- 4000+ employees
- 5000+ global customers
- 21 GW LTSA experience
- 65+ years OEM manufacturing experience
- 38+ GW O&M experience
- 90+ facilities managed

Services Portfolio



Gas Turbines

Full-service provider offering gas turbine solutions across a range of OEMs for light industrial, aero-derivative and heavy duty gas turbines



Steam Turbines

Industry-leading engineered solutions and turnkey support to increase reliability and efficiency



Generators

Comprehensive testing and assessment program, manufacturing and rewinds, high speed balancing with heat run and running electrical testing



Compressors

Rerate, inspect, repair, reverse-engineer and rebuild centrifugal, axial and integrally geared compressors



Transformers

Design and manufacture new grid transformers, autotransformers, and generator step-up (GSU)



Field Services

24/7 turbomachinery field services, rapid mobilization and industry leading safety performance



Operations and maintenance

Comprehensive third-party facility operations and maintenance service for power plants, including risk management and operation support services

심포지엄 프로그램

Day 1		2024년 11월 14일 (목요일)
10:20~11:00	등록	컨퍼런스홀 로비(1F)
11:00~12:00	기술발표 I	3 Topics
12:00~12:45	오찬	에뿌제(3F)
12:45~13:00	개회 및 환영사	김재운 협회장
13:00~15:00	기술발표 II	6 Topics
15:00~16:00	전시관람 및 휴식	엑스포홀 로비(2F)
16:00~18:00	기술발표 III	6 Topics
18:00~18:30	전시관람 및 휴식	엑스포홀 로비(2F)
18:30~20:30	환영만찬	에뿌제(3F)
20:30~22:00	2차 친선교류	외부 장소 이동
Day 2		2024년 11월 15일 (금요일)
09:20~12:00	기술발표 IV	8 Topics
12:00~13:00	오찬 및 전시관람	에뿌제(3F)
13:00~14:20	기술발표 V	4 Topics
14:20~14:50	대한회전기계엔지니어협회 정기 총회	컨퍼런스홀(1F)
14:50~15:00	폐회	

SYMPOSIUM PROGRAM

Day 1		Thursday, November 14, 2024
10:20~11:00	Registration	Conference Hall Lobby (1F)
11:00~12:00	Technical Session I	3 Topics
12:00~12:45	Lunch	Epouser (3F)
12:45~13:00	Opening & Welcome Address	President of KRMEA
13:00~15:00	Technical Session II	6 Topics
15:00~16:00	Exhibition & Coffee Break	Expo Hall Lobby (2F)
16:00~18:00	Technical Session III	6 Topics
18:00~18:30	Exhibition & Coffee Break	Expo Hall Lobby (2F)
18:30~20:30	Welcome Banquet	Epouser (3F)
20:30~22:00	After Party	Change of Venue
Day 2		Friday, November 15, 2024
09:20~12:00	Technical Session IV	8 Topics
12:00~13:00	Lunch & Exhibition	Epouse (3F)
13:00~14:20	Technical Session V	4 Topics
14:20~14:50	General Meeting of the KRMEA	Conference Hall (1F)
14:50~15:00	Closing	

TECHNICAL SESSION SCHEDULES

Day 1 Thursday, November 14, 2024

The 1st Technical Session

- | | |
|---------------|---|
| 11:00 ~ 11:20 | Performance Evaluation of Modular Reed Valves for Refinery Hydrogen Compressor Applications
Sameer Khan, Regional Sales Director - MEA, Atlas Copco |
| 11:20 ~ 11:40 | Upcycling - Tailored remanufacturing by new concept Graphene Fusion Technology
Jennifer Yao, Team Leader, Solomon Technology CO., LTD. |
| 11:40 ~ 12:00 | Cases of resolving repetitive damage of pumps using operation condition analysis
Jaecheol Byun, Director, KEPCO KPS |

The 2nd Technical Session

- | | |
|---------------|---|
| 13:00 ~ 13:20 | Carbon Dioxide and Hydrogen Compression
Klaus Brun, Global Director Research & Development, Ebara Elliott Energy |
| 13:20 ~ 13:40 | Steam turbine's actuator systems - Challenges and pitfalls or retrofitting heritage turbines
Massimo Buzzaccaro, Turbomachinery Control Engineer, Voith Turbo |
| 13:40 ~ 14:00 | YNCC's Troubleshooting and Lessons Learned: H2 Compressor Shaft Seal System Upgrade Project
Sanggil An, Assistant Manager, YNCC |
| 14:00 ~ 14:20 | Oil Film Seal Troubleshooting of Centrifugal Compressor
Taewon Kang, Senior Manager, S-OIL |

- | | |
|---------------|--|
| 14:20 ~ 14:40 | Case study on steam turbine application of a small package unit
Junehee Kim, PL, SK Advanced |
|---------------|--|

- | | |
|---------------|---|
| 14:40 ~ 15:00 | Mitigating Vibration and Electrostatic Discharge Problems in Steam Turbine-Generator Train
Roengchai Chumai, Principal Engineer, Machinosis Co., Ltd. |
|---------------|---|

The 3rd Technical Session

- | | |
|---------------|--|
| 16:00 ~ 16:20 | Challenges in Carbon Capture, Utilization & Storage (CCUS) Enhanced Oil Recovery (EOR) Injection Compressor of an FPSO
Alan Wong, Technical Consulting Engineer, Compressor Controls Corp
Jan Vaas, Head of Sales Project Development APAC, Voith Turbo Co.,Ltd |
|---------------|--|

- | | |
|---------------|---|
| 16:20 ~ 16:40 | Investigation on downsizing of stator parts of a low specific speed centrifugal compressor
Hiradate Kiyotaka, Chief Researcher, Hitachi Ltd |
|---------------|---|

- | | |
|---------------|--|
| 16:40 ~ 17:00 | Evaluation of vibration in reciprocating compressor systems by applying the EFRC guideline and manufacturer's know-how
Tim Norden, Technical Head of Plant Engineering, NEUMAN & ESSER |
|---------------|--|

- | | |
|---------------|--|
| 17:00 ~ 17:20 | Energy Cost Reduction through Modified Capacity Control Methods
Junghwan Song, Senior Manager, HD Hyundai Chemical |
|---------------|--|

- | | |
|---------------|--|
| 17:20 ~ 17:40 | Maintain the reliability of rotating equipment by monitoring the concentration of iron wear debris
Taeheon Kim, CEO, Solge |
|---------------|--|

- | | |
|---------------|---|
| 17:40 ~ 18:00 | Unlocking hidden opportunities for pumps' energy efficiency
Ronisingh Chitana & Lucas How, Head of Retrofit APAC, Sulzer Korea Ltd. |
|---------------|---|

TECHNICAL SESSION SCHEDULES

Day 2 Friday, November 15, 2024

The 4th Technical Session

9:20 ~ 9:40	State-of-the-art MAN technology in Vintage casings Mei Ling Chin, Head of Engineered Solutions Bids & Execution, MAN Energy Solutions
9:40 ~ 10:00	Sealing Solutions for CO2 compressor and pump applications used in the CCUS process Nikolaus Necker, Lead Expert Oil&Gas / Refinery, EagleBurgmann Germany GMBH & Co. KG
10:00 ~ 10:20	Trouble shooting of cryogenic pump Hichan shin, Assistant Manager, LG Chem
10:20 ~ 10:40	Bearing Failure of Reciprocating Compressor Kyunghoon Jung, Senior Manager, GS Caltex
10:40 ~ 11:00	Root Cause Analysis of Packing Case Failure in non-lubricated reciprocating compressors Franck Vauthier, Global Product Manager Rings & Packing, HOERBIGER Wien GmbH
11:00 ~ 11:20	Enhancing Sustainability in Energy Production: The Role of the Lifetime Assessment Program in Gas Turbine Rotor Management Francesco Cardile, Engineer, ANK Plant Service Co.,Ltd (Ethos Energy)
11:20 ~ 11:40	Reliability Improvement for Extruder Pelletizer In Polymer Process Donguk Park, PM, SK Energy
11:40 ~ 12:00	API Standards for Centrifugal Compressors Dominic Sarachine, Product Manager, Engineered and Air Separation, FS-Elliott Co., LLC

The 5th Technical Session

13:00 ~ 13:20	Technical approach for Compressor & Turbine Maintenance Interval Extension Program, Turnaround Optimization and Safety Measures Makoto Sakaguchi, Acting Manager, Mitsubishi Heavy Industries Compressor Corporation (MHI)
13:20 ~ 13:40	How to use AI for machine condition monitoring_ Practical Use Large Language Models (LLM) and AI for Rotating Machinery Diagnostics Sunghwan Kim, Associate Executive Director, Baker Hughes
13:40 ~ 14:00	Remaining-Useful-Lifetime (RUL) Algorithm Validation at Clariant Sungjin Kim, DPS Sales Expert, Burckhardt Compression Korea Ltd.
14:00 ~ 14:20	Connective Technology to Reduce Power Loss Using by Cyber-Physical System in Turbocompressor Yongbok Lee, Distinguished Research Scientist/Professor, KIST

CONTACT

(031) 980-7700

경기도 김포시 대곶면 소래로 66

Mssales@flowserveksm.co.kr
Fcsales@ksm.co.kr

www.ksm.co.kr

Introduction

Dry Gas Seal Design
Hang-Up 문제가 없는 신개념
Dry Gas Seal 개발을 목표로
Design 개선을 추구해왔습니다.

Face 신소재 기술개발
Face 신소재 기술개발은 통한
윤활 문제 해결 목표를
달성하였습니다.

고객과 함께하는 회사
고객의 가치를 추구하며 신뢰받는
기업이 되기 위하여 최선의 노력을
다하고 있습니다.

FLOWERVE KSM

Mechanical Seal



“압도적인 국내 시장 점유율”

1979년 한국셀마스탑법인 설립 Mechanical Seal은 극한의 안정성을 필요로 하는 원자력 발전소를 비롯하여 석유 정유 화학 등 산업 전반에 널리 사용되고 있습니다. 지난 45년간 끊임 없는 연구 개발로 세계 최고의 Mechanical Seal 및 Fine Ceramic 정밀 부품을 생산 국산화 및 수출에 기여했으며, 첨단 기술력을 바탕으로 국내 Mechanical Seal 시장에서 압도적인 시장 점유율을 유지하고 있습니다.

Industry

정유 화학 반도체 원자력 / 발전 펄프 & 제지 방위산업

350 Customers



Products

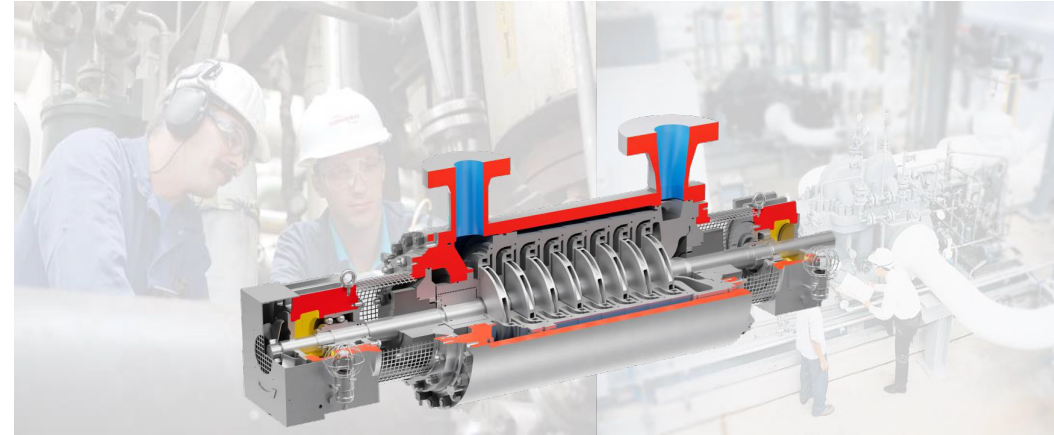


KSM Group



TEL: +82-(0)2-561-7800 HANNACO@HNR.LTD.COM

Durco ● Worthington ● Byron Jackson ● IDP (Ingersoll-Dresser Pumps) ● Pacific ● Pleuger ● Lawrence Pumps ● TKL ● SIHI



FLOWERVE QRC, 양산

(Quick Response Center)

- 정유, 석유화학, 발전용 펌프의
- 세계 최고 수준의 필드서비스 제공
- FLOWERVE 정품 파트 공급
- 신규 FLOWERVE 펌프 제작 및 수리



FLOWERVE RVX Upgrade

ISO 13709/API 610 back pullout retrofit

노후화 설비 성능 복원 및 표준화,
최신화를 위한 최적의 솔루션

Global Pump Solutions Provider **HYOSUNG GOODSPRINGS**

HYOSUNG GOODSPRINGS provides optimized pump solutions that you can trust

효성굿스프링스는 제품의 신뢰성을 인정받아 **국내 정유 및 석유화학플랜트**는 물론, **ARAMCO(사우디), KNPC(쿠웨이트), ADNOC(UAE), ExxonMobil(USA), Chevron Phillips(USA)** 등 해외 국영 및 Major Oil & Gas 기업들에게 고효율의 제품을 공급하고 있습니다.

Double Barrel Multi-Stage Pump(BB5)는 3,800m, 410℃, 8,000rpm의 실적을 보유하고 있으며, 우수한 기술력을 바탕으로 Oil & Gas 플랜트의 핵심 펌프인 **Reactor Feed Pump (2,600m, 5,300rpm, 4,300kW, 285℃)**를 제공하고 있습니다.

또한, 저온 service condition인 **-132℃ Methane 펌프** 및 **62,000m³/h, Super-Duplex 재질의 Cooling Water Pump**도 안정적으로 공급하고 있습니다.

이는 국내 Oil & Gas 기업의 적극적인 지원이 있었기 때문이며 앞으로도 더욱 신뢰성 높은 Rotating Machine을 공급하는 업체가 되도록 할 것입니다. 감사합니다.



Cryogenic Pump (VS6)



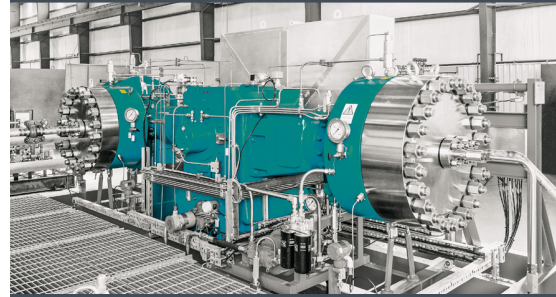
Double Barrel Multi-Stage Pump (BB5)



Cooling Water Pump (BB1)



Solutions for the Energy Infrastructure of Tomorrow



At NEUMAN & ESSER, a century of hydrogen compression expertise meets the technologies required for a decarbonized society.

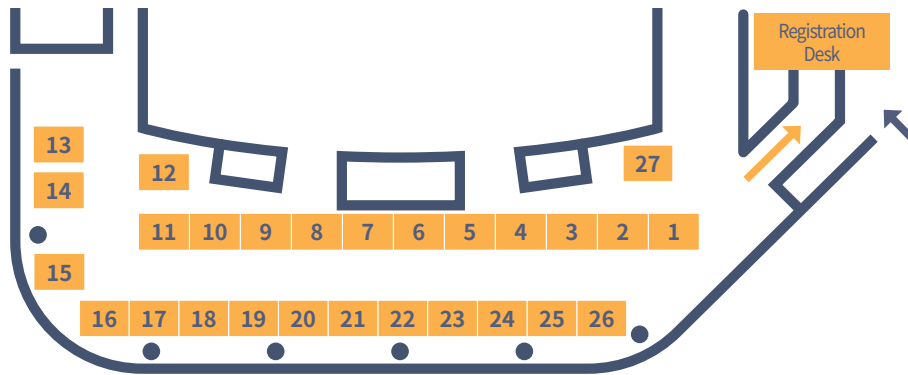
As an OEM for reciprocating compressors, electrolyzers and reformer systems including HRS, we bring in all plant components along the value chain and balance them for the optimal overall solution.

Family-owned for almost 200 years, today more than 1,600 employees are committed to bringing challenging projects to life around the world – from evaluating project feasibility, through engineering, construction, and commissioning to digitally supported 360° service during operation.



EXHIBITION OVERVIEW

Operation Hours	Nov. 14(Thu.), 09:00~19:00 Nov. 15(Fri.), 09:00~15:30
Venue	Yeosu Expo Convention Center, Conference Hall(1F)
Scale	27Booths



Company		Company		Company	
1	Ebara Elliott Energy	10	Solge Corporation	19	JEILMI CO., LTD.
2		11		20	SHINHO E&T Co., Ltd.
3	Hannarae International Co.,Ltd	12	Gates Unitta Korea & MEGATEC Co., Ltd.	21	UIT
4	NEUMAN & ESSER	13	JINYOUNG TBX CO.,LTD	22	GASPOWER CO.,LTD.
5	Mitsubishi Chemical Group	14	SMG CO., LTD	23	KTM Engineering
6	Metrix Instrument Co.	15	Atlas Copco	24	ANK Plant Service Co.,Ltd (Ethos Energy)
7	ONEPREDICT	16	EagleBurgmann	25	InFaith Co., LTD.
8	SA Engineering Co.,Ltd	17	Hitachi Industrial Products, Ltd.	26	Solomon Technology
9	FSE Korea Co., Ltd.	18	Burckhardt compression	27	Turbomachinery Laboratory at Texas A&M University

EXHIBITOR'S DESCRIPTIONS

BOOTH No. 1-2 Ebara Elliott Energy



Main Exhibit Item	centrifugal compressors, steam turbines, power recovery expanders, custom pumps, cryogenic pumps and expanders, engineered solutions and aftermarket services.		
Country	Singapore		
CEO	Takanobu Miyaki		
Contact Person	Yik Fei Chew		
Job Title	Asia Pacific Marketing Leader		
TEL(Direct)	82)-2-6959-5403 65)-6506-0642 65)-9772-4698	FAX	82)-70-481-5403 65)-6563-1387
Website	www.elliott-turbo.com	E-mail	yyoo@elliott-turbo.com ychew@elliott-turbo.com
Address	1A, International Business Park, 07-01, Singapore 609933		
Company Introduction	Ebara Elliott Energy provides a range of products, including centrifugal compressors, steam turbines, power recovery expanders, custom pumps, and cryogenic pumps and expanders. We offers complete global service packages including parts, repairs, emergency response, scheduled outages, modifications & service engineering.		
Products & Exhibits	<p>The-Flex-Op Compressor Arrangement</p>		

EXHIBITOR'S DESCRIPTIONS

BOOTH No. 3

Hannarae International Co.,Ltd

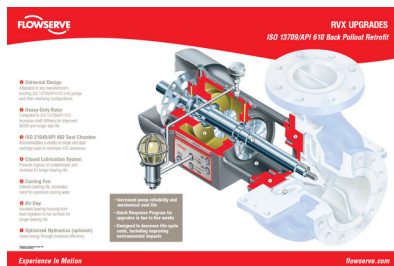


Main Exhibit Item	FLOWSERVE RVX Retrofit		
Country	South Korea		
CEO	South Korea		
Contact Person	Byunghak Ahn		
Job Title	President		
TEL(Direct)	82)-2-561-7800	FAX	82)-2-564-7300
Website		E-mail	hannaco@hnr ltd.com
Address	06150, 329, Teheran-ro, Gangnam-gu, Seoul, Republic of Korea		

Company Introduction
We are the exclusive sales distributor of the world best quality pump supplier, Flowserve Pump (IDP, Niigata Worthington, Ingersoll-Rand, Durco, Pacific, Byron Jacson and United Brand) for Petrochemical Refinery.

ALL KINDS OF PUMPS & PARTS for OIL&GAS, PETROCHEMICAL, CHEMICAL, GENERAL, PUMP MAINTENANCE, REPAIR, TROUBLE SHOOTING.

Products & Exhibits



BOOTH No. 4

NEUMAN & ESSER



Main Exhibit Item	Reciprocating compressor		
Country	Germany		
CEO	Arnd Viets & Luca Cini		
Contact Person	Junchul Hwang		
Job Title	Prime Market Sales Manager		
TEL(Direct)	82)-10-5285-9166	FAX	82)-55-904-1831
Website	www.neuman-esser.com	E-mail	Junchul.hwang@neuman-esser.com
Address	51020, 56, Yulha 6-ro, Gimhae-si, Gyeongsangnam-do, Republic of Korea		

Company Introduction
We stand as the industry's reliable partner, propelling the energy transition and the circular economy through its integrated solutions for the energy infrastructure of tomorrow. Our compressor solutions with in-house sealing technology are utilized extensively. Catering to the traditional oil and gas industry, as well as the emerging hydrogen economy and green gas industry.

Reciprocating compressor Diaphragm compressor Hydrogen Electrolyze

Products & Exhibits



EXHIBITOR'S DESCRIPTIONS

BOOTH No. 5

Mitsubishi Chemical Group



Main Exhibit Item	Engineering plastic		
Country	South Korea		
CEO	Hyunchul Kim		
Contact Person	Sangwoo Kwak		
Job Title	Assistant Manager		
TEL(Direct)	82)-41-411-9900 82)-10-8380-2422	FAX	82)-41-411-9980
Website	www.mcam.com	E-mail	sangwoo.kwak@mccg.com
Address	31047, 33, Munseong 2-gil, Seonggeo-eup, Seobuk-gu, Cheonan-si, Chungcheongnam-do, Republic of Korea		
Company Introduction	Mitsubishi Chemical Group is a leader in the development of advanced materials used in the conveyance and processing of gas and fluids , providing custom fluid management solutions across applications in various industries, including the Energy Market. Our offering includes leading material technologies for managing fluid systems and processes, as well as leading R&D and testing to ensure the best possible solutions. From material selection to global manufacturing, we ensure leading expertise, on-time delivery, and reliable material performance.		
Products & Exhibits	Semi-finished engineering plastic 		

BOOTH No. 6

Metrix Instrument Co.

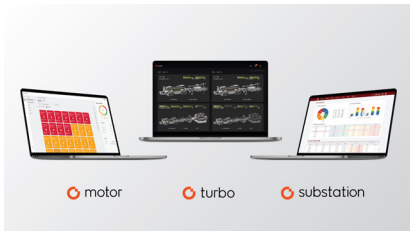


Main Exhibit Item	Vibration Sensor, Vibration Switch, Vibration Monitor, Shaker, Potable		
Country	USA		
CEO	Scott Breeding		
Contact Person	Sally Shim		
Job Title	Manager		
TEL(Direct)	82)-10-7149-5571	FAX	82)-70-7614-3588
Website	www.MetrixVibration.com	E-mail	sungwon.shim@metrixvibration.com
Address	21986, 84, Songdomunhwa-ro 84beon-gil, Yeonsu-gu, Incheon, Republic of Korea		
Company Introduction	Metrix is an experienced leader in the condition monitoring and asset protection industry. For more than 55 years, Metrix has been the preferred supplier of industrial vibration monitoring systems to many of the world's leading manufacturers and users of pumps, motors, fans, cooling towers, gas turbines, generators, centrifugal and reciprocating compressors, and other rotating and reciprocating machinery. With headquarters in Houston, Texas, we operate in more than 65 countries via factory-direct sales, along with a strategic network of instrumentation partners.		
Products & Exhibits	Metrix invented the technology of simple, affordable machinery protection with our vibration switch offerings, revolutionary 4-20mA vibration transmitters, robust high-temperature velocity sensors, and innovative impact transmitter technology. We look forward to working with our customers to provide the best solution to meet their requirements. <div style="display: flex; justify-content: space-between;"> <div style="width: 45%;"> <p>Complete Solutions</p> <p>Metrix has been providing machinery condition monitoring solutions for more than 55 years. Proactive maintenance enabled through world class monitoring.</p>  </div> <div style="width: 45%;"> <p>Digital Proximity System (DPS)</p> <p>Reduce spare parts inventory by replacing different drivers and transmitters with a field configurable device that easily connects to any proximity probe with a variety of system lengths. Take advantage of features like Cross Talk Elimination, TightView™, Unknown Shaft Material, SIL, Hazardous Area Ratings, and the best Speed Measurement System in the world.</p>  </div> </div>		

EXHIBITOR'S DESCRIPTIONS

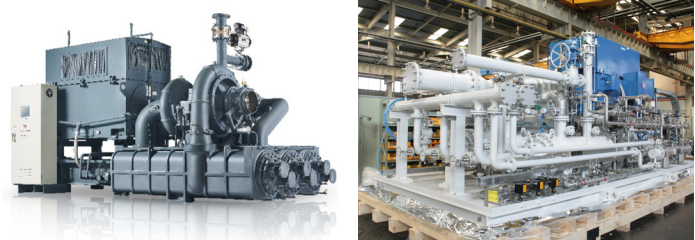
BOOTH No. **7** ONEPREDICT



Main Exhibit Item	GUARDIONE®		
Country	South Korea		
CEO	Byengdong Youn		
Contact Person	Eunji Gu		
Job Title	Manager		
TEL(Direct)	82)-2-884-1664 82)-10-9281-4531	FAX	82)-2-884-1664
Website	https://ko.onepredict.ai/	E-mail	contact@onepredict.com eunji.gu@onepredict.com
Address	4, Eonju-ro 125-gil, Gangnam-gu, Seoul, Republic of Korea		
Company Introduction	ONEPREDICT is a digital solution provider that offers Predictive Maintenance(PdM) information with a combination of industrial AI and IoT technologies. Within the power generation, utilities, petrochemical, and manufacturing industries, its digital solution, GUARDIONE®, helps you reduce downtime, increase facility resilience, and make the most optimal decisions.		
Products & Exhibits	<p>GUARDIONE® TURBO is a predictive maintenance solution that comprehensively diagnoses the status of large rotating machines by analyzing both vibration and operational variables.</p>  <p style="text-align: center;"> ○ motor ○ turbo ○ substation </p>		

BOOTH No. **8** SA Engineering Co., Ltd.




Main Exhibit Item	Centrifugal compressor, Turbo blower		
Country	South Korea		
CEO	Hoon Lee		
Contact Person	Ara Go		
Job Title	Associate Manager		
TEL(Direct)	82)-42-600-1825 82)-10-3117-0051	FAX	82)-42-931-2979
Website	www.saeg.co.kr	E-mail	ara.go@saeg.co.kr
Address	34324, 40, Sinildong-ro 67beon-gil, Daedeok-gu, Daejeon, Republic of Korea		
Company Introduction	Established in 1987, we have accumulated 30 years of experience specializing in turbo compressor/blower production. We broke new ground in the compressor industry by developing the first centrifugal compressor in Korea. We are successfully providing our products to overseas industrial fields, including Europe, the U.S., and the Middle East, based on our high quality.		
Products & Exhibits	<ol style="list-style-type: none"> 1. Centrifugal air & gas compressors, Engineered air & gas compressors (Steam, Methane, N2, CO2, Fuel gas, API code etc.) 2. Turbo blower for wastewater treatment, transfer of cement, petrochemical raw materials and others.. 		

EXHIBITOR'S DESCRIPTIONS

BOOTH No. 9

FSE Korea Co., Ltd.

FSE KOREA 에프에스이 코리아(주)
TURBO AIR COMPRESSOR

Main Exhibit Item	Centrifugal Air Compressor (Rotor, Bearing, Carbon Seal) Model : Polaris (Industrial Type), PAP Plus (Engineered Type) High Pressure Piston Compressor		
Country	South Korea		
CEO	Seunghwan Lim		
Contact Person	Jiho Lim		
Job Title	Deputy General Manager		
TEL(Direct)	82)-2-3427-2570 82)-10-8912-9976	FAX	82)-2-3427-2573
Website	www.fsekorea.com	E-mail	sales@fsekorea.com sswhan@fsekorea.com
Address	05236, 133, Godeok-ro, Gangdong-gu, Seoul, Republic of Korea		
Company Introduction	<p>FS-Elliott's Oil Free, centrifugal air has led the industry with a technologically advanced design that delivers reliable, trouble-free operation with the lowest cost of ownership. Offering a horsepower range of 250 to 5000. Our compressors are ideally suited to a broad range of industries.</p> <p>Bauer Kompressoren GmbH, founded in 1946 and based in Munich, Germany, is a global leader in high-pressure compression systems. Specializing in piston compressors, Bauer serves various industries such as diving, fire and safety, industrial applications, defense, and maritime. Its advanced technology ensures reliable and efficient high-pressure air and gas systems, capable of handling pressures up to 500 bar (7250 psi) and beyond.</p>		
Products & Exhibits	<p>Centrifugal Air Compressors(API 672) Model : Polaris (Industrial Type), PAP Plus (Engineered Type), High Pressure Piston Compressor</p> 		

BOOTH No. 10-11

Solge Corporation

Lubrication Plus
SOLGE

Main Exhibit Item	Oil Purifier, Air Breather, Oil Sensor, EZ-Series(Easy Analyzer)		
Country	South Korea		
CEO	Taeheon Kim		
Contact Person	Jonghui Kim		
Job Title	Manager		
TEL(Direct)	82)-53-588-3301	FAX	82)-53-588-3151
Website	www.solge.com	E-mail	cs@solge.com
Address	42922, 11, Secheonbuk-ro 8-gil, Dasa-eup, Dalseong-gun, Daegu, Republic of Korea		
Company Introduction	<p>SOLGE is total solution provider of lubrication management. It was founded in 1999, and as franchise of Noria Corp in USA, and WearCheck International, Lubrication Plus has provided services, and solutions for lubrication management over 25 years to most of industries like Power Plant, Petrochemical, Refinery, Paper, Steel, Cement and Marine fields.</p>		
Products & Exhibits	<p>Oil Purifier(User Customizing), Vartector(Varnish Analyzer), Air Breather, Oil sensor(On line, Off line), TOMs(Oil Monitoring System), Oil filter, Royal Purple(Industrial Lubricants), EZ-Series(Easy Analyzer)</p> 		

EXHIBITOR'S DESCRIPTIONS

BOOTH No. 12

Gates Unitta Korea & MEGATEC Co., Ltd



Main Exhibit Item	Timing Belt, Timing Pulley, V-Belt, V-Belt Pulley, Coupling, Industrial Hose		
Country	South Korea		
CEO	Seonggoo Kim		
Contact Person	Seonggoo Kim		
Job Title	CEO		
TEL(Direct)	82)-10-6227-6514 82)-2-855-6514	FAX	82)-2-855-6513
Website	www.gates.com	E-mail	sgkim@amegatec.com
Address	08501, 907-4, 96, Gamasan-ro, Geumcheon-gu, Seoul, Republic of Korea		
Company Introduction	A specialized company in industrial power transmission systems		

Timing Belt, Timing Pulley, V-Belt, V-Belt Pulley, Coupling, Industrial Hose

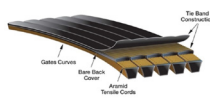
Products & Exhibits



POLY CHAIN® SYNCHRONOUS BELTS



PREDATOR™ POWERBAND™ BELTS



HYDRAULIC HOSE AND COUPLINGS



BOOTH No. 13

JINYOUNG TBX CO., LTD



Main Exhibit Item	Turbine blade, Diaphragm		
Country	South Korea		
CEO	Joonseob Kim		
Contact Person	Seoyeong Hong		
Job Title	Assistant		
TEL(Direct)	82)-55-293-0477 82)-10-9909-9283	FAX	82)-55-255-4937
Website	http://www.blade-korea.com/	E-mail	blade@tbx.co.kr syhong@tbx.co.kr
Address	51528, 501, Nammyeon-ro, Seongsan-gu, Changwon-si, Gyeongsangnam-do, Republic of Korea		

Since its establishment in 1982, Jinyoung TBX Co., Ltd. has been producing turbine blades, which are the core components of power generation facilities, since the late 1980s, and has been praised by the world's leading makers for its success in developing and mass-producing blades that relied on imports.

Turbine blade, Diaphragm: Composed of the core components of steam turbines and gas turbines in nuclear, hydro, thermal, combined thermal power plants, steam or gas generated by boilers or other facilities passes through blades inside the turbine, and then turns the generator to generate electricity.

Products & Exhibits



EXHIBITOR'S DESCRIPTIONS

BOOTH No. 14

SMG CO., LTD



Main Exhibit Item	GEAR, GEAR BOX, GEAR PUMP		
Country	South Korea		
CEO	Kyungjae Im		
Contact Person	Gyuchul Im		
Job Title	General Director		
TEL(Direct)	82)-62-954-0303 82)-10-3301-7701	FAX	82)-62-954-0301
Website	www.smgear.co.kr	E-mail	a1@smgear.co.kr
Address	61089, 341, Cheomdanyeonsin-ro, Buk-gu, Gwangju, Republic of Korea		
Company Introduction	We are supplying key imported parts for power transmission, such as GEAR BOX and GEAR PUMP, by domestic production to various chemical and oil refinery companies. In particular, we are solving various difficulties such as supply and demand problems of imported parts, delivery problems, and high unit prices. At this exhibition, we will present information on domestic production and OVERHAUL of GEAR BOX and GEAR PUMP parts, so please visit our booth and we will do our best to provide consultation.		
Products & Exhibits	GEAR PUMP(SMPO SERIES), GEAR PUMP(SMEP SERIES), PLANETARY GEAR BOX, COOLING TOWER GEAR BOX		

BOOTH No. 15

Atlas Copco



Main Exhibit Item	Atlas Copco Straight Flo™ Valves		
Country	USA		
CEO	Vagner Rego		
Contact Person	Sameer Khan		
Job Title	Regional Sales Director - MEA		
TEL(Direct)	1)-973-3940-7270	FAX	82)-31-375-4092
Website	https://www.zahroofvalves.com https://www.atlascopcogroup.com	E-mail	Sameer.khan@zahroofvalves.com straightflo-sales@atlascopco.com
Address	Atlas Copco Compressors LLC , 15045 Lee Road, Houston TX 77032 , USA		
Company Introduction	Atlas Copco Compressors LLC is specialized in manufacturing of reciprocating compressor valves with revolutionary technology using modular reeds , we are driven to vastly improve the efficiency and profitability of all industries that use industrial reciprocating compressors. Straight Flo™ compressor valves utilize patented Modular Reed Technology (MRT™). MRT™ employed in Atlas Copco' products contributes to enhanced compressor efficiency, improved performance, and reduced operating costs for reciprocating compressors across various industries.		
Products & Exhibits	Reciprocating Compressor Valves with patented Modular Reed Technology		

EXHIBITOR'S DESCRIPTIONS

BOOTH No. 16

EagleBurgmann

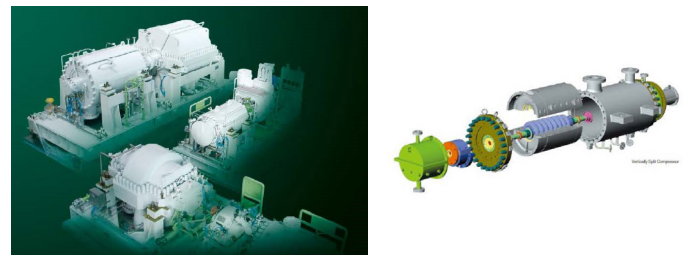


Main Exhibit Item	Mechanical Seal, Dry Gas Seal, Diaphragm Coupling		
Country	South Korea		
CEO	Steven Paul Ryder		
Contact Person	Jerry Kim		
Job Title	Sales Director		
TEL(Direct)	82)-10-8804-2911	FAX	82)-31-375-4092
Website	www.eagleburgmann.com	E-mail	jerry.kim@kr.eagleburgmann.com
Address	18103, 28-77, Gajangsaneopdong-ro, Osan-si, Gyeonggi-do, Republic of Korea		
Company Introduction	We are one of the leading providers of industrial sealing technology on the international stage. Our products and comprehensive services are used wherever the key requirements are reliability and safety.		
Products & Exhibits	<p>Zero Emission DGS Extremely robust and safe Low N2 leakage High operating pressure</p>  <p>CobaDGS Zero emission solution. Extremely robust and safe.</p>		

BOOTH No. 17

Hitachi Industrial Products, Ltd.




Main Exhibit Item	Centrifugal Compressor		
Country	Japan		
CEO	Keizo Kobayashi		
Contact Person	Taehan Kim		
Job Title	Manager		
TEL(Direct)	82)-2-6322-8531 82)-10-2127-8233	FAX	82)-2-6322-8598
Website	https://www.hitachi-ip.com/index.html	E-mail	taehan.kim.nn@hitachi.com
Address	Sumitomo Fudosan Akihabara First Building, 1-5-1 Sotokanda Chiyoda-ku, Tokyo 101-0021 Japan /		
Company Introduction	We established 1910, manufactures Rotating Machinery and Electrical Systems. Centrifugal Compressors based on API Standard are globally installed. We offer maintenance services after installation including spare parts, repairs, emergency call, supervisory services.		
Products & Exhibits	<p>Centrifugal Compressor</p> 		

EXHIBITOR'S DESCRIPTIONS

BOOTH No. 18

Burckhardt compression

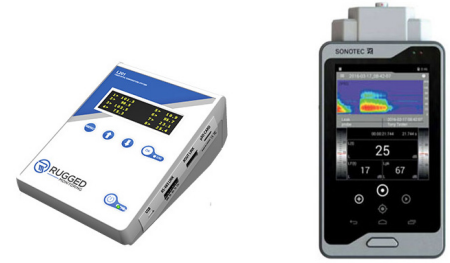


Main Exhibit Item	PROGNOST Products Predictive Maintenance of Rotating Equipment with Online Condition Monitoring and Protection Technologies from PROGNOST Systems		
Country	South Korea		
CEO	Patrick Chong Jun Hui		
Contact Person	Sungjin Kim		
Job Title	DPS Sales Expert		
TEL(Direct)	82)-51-832-5975 82)-10-9337-6076	FAX	82)-51-832-6031
Website	www.burckhardtcompression.com	E-mail	sung-jin.kim@burckhardtcompression.com
Address	46721, 48, 58-beongil, Yutongdanji 1-ro, Gangseo-gu, Busan, Republic of Korea		
Company Introduction	About PROGNOST Systems Development and production of the world's best Online Monitoring Systems for Predictive Maintenance PROGNOST Systems GmbH is part of the Burckhardt Compression AG Group and a global leader in automated condition monitoring and efficient protection of people, the environment and reciprocating/turbomachinery and complex gearboxes.		
Products & Exhibits	<p>PROGNOST Products Predictive Maintenance of Rotating Equipment with Online Condition Monitoring and Protection Technologies from PROGNOST Systems PROGNOST®-SILver is a flexible, SIL 3 certified platform for integrated asset protection. It offers everything operators and instrumentation professionals call for. PROGNOST®-NT is the all-in-one Solution for Condition Monitoring.</p> 		

BOOTH No. 19

JEILMI CO., LTD.



Main Exhibit Item	SONOTEC Ultrasound Sonaphone, RUGGED MONITORING Fiber optic temperature monitor / sensor		
Country	South Korea		
CEO	Gongwoo Han		
Contact Person	Yiran Jin		
Job Title	Assistant Manager		
TEL(Direct)	82)-31-463-3700 82)-10-9340-6806	FAX	82)-31-463-3701
Website	www.jeilmi.com	E-mail	jeil@jeilmi.com jyr@jeilmi.com
Address	14057, 401, Simin-daero, Dongan-gu, Anyang-si, Gyeonggi-do, Republic of Korea		
Company Introduction	Since 1991. JEILMI has been focusing on accurate measuring instruments and scientific instruments. We have endeavored to support the advancement of Korea science and technology by selecting spot-on instruments for Korean industries. We continue to supply optimal items to R&D, QA and product lines by having had a lots experience and perspective in it.		
Products & Exhibits	<p>SONOTEC Ultrasound Sonaphone, RUGGED MONITORING Fiber optic temperature monitor / sensor</p> 		

EXHIBITOR'S DESCRIPTIONS

BOOTH No. 20

SHINHO E&T Co., Ltd.



Main Exhibit Item	Vibration Sensor, Ranger Pro, SCOUT/ADRE, Orbit 60, Orbit DCM, System 1 EVO		
Country	South Korea		
CEO	Sohwan Lee		
Contact Person	Byeongsu Kim		
Job Title	Team Leader		
TEL(Direct)	82)-51-715-0789 82)-10-6495-5348	FAX	82)-51-715-0786
Website	www.shinhoent.co.kr	E-mail	info@shinhoent.co.kr bskim@shinhoent.co.kr
Address	46059, 9, Eumnae-ro 15beon-gil, Gijang-eup, Gijang-gun, Busan, Republic of Korea		
Company Introduction	Since SHINHO E&T was founded in 2004, we have been working as a noise and vibration specialist company, and we are a channel partner of Bently Nevada and a special agent of Hyosung Goodsprings. - Bently Nevada, a Baker Hughes business is an asset protection and condition monitoring hardware, software and service company for energy industry.		
Products & Exhibits	<p>Vibration Sensor, Ranger Pro, SCOUT/ADRE, Orbit 60, Orbit DCM, System 1 EVO</p> 		

BOOTH No. 21

UIT



Main Exhibit Item	AFT		
Country	South Korea		
CEO	Sungtae Kim		
Contact Person	Hyeonggyu Kang		
Job Title	Assistant Manager		
TEL(Direct)	82)-2-2051-2305 82)-10-6679-8771	FAX	82)-2-2051-2306
Website	http://www.uitsolutions.com	E-mail	uitinc@uitsolutions.com ryan.kang@uitsolutions.com
Address	06626, 171, Saimdang-ro, Seocho-gu, Seoul, Republic of Korea		
Company Introduction	Unlimited Innovation in Technology Since its establishment in 1998, UIT has introduced leading global technologies and provided solutions to enhance business efficiency across various industries in Korea. UIT's services include software design and development, IT consulting, infrastructure support, and project management.		
Products & Exhibits	<p>We have established partnerships with the following companies and serve as their official distributor in Korea. 1. AFT (Applied Flow Technology) AFT is a leader in providing software solutions for fluid system modeling and analysis. 2. Concepts NREC Concepts NREC is a renowned company specializing in the design, analysis, and manufacturing of turbomachinery.</p> 		

EXHIBITOR'S DESCRIPTIONS

BOOTH
No. 22

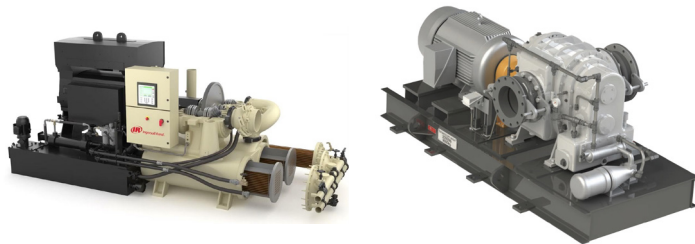
GASPOWER CO., LTD.



Main Exhibit Item	Centrifugal Compressor, Blower & Vacuum Pump		
Country	South Korea		
CEO	Byeongseok Kim (Bronson Kim)		
Contact Person	Sangyong(Steve) Jeon		
Job Title	Sales Manager		
TEL(Direct)	82)-2-6111-6114 82)-10-4080-6721	FAX	82)-2-6111-6111
Website	http://www.gaspower.co.kr	E-mail	gas@gaspower.co.kr
Address	08504, 165, Gasan digital 2-ro, Geumcheon-gu, Seoul, Republic of Korea		
Company Introduction	An Expert for GAS & AIR Compressors, Blower & Vacuum Pumps Package and Service as a Distributor for Ingersoll Rand. Also we supply engineering design service base on lots of experiences.		

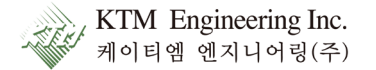
Centrifugal, Screw, Piston Compressors,
Blowers & Vacuum pumps

Products &
Exhibits



BOOTH
No. 23

KTM Engineering



Main Exhibit Item	PCB Piezotronics & IMI Sensor		
Country	South Korea		
CEO	Yeongcheon Song		
Contact Person	Sangheon Lee		
Job Title	Manager		
TEL(Direct)	82)-31-776-2200 82)-10-7123-2794	FAX	82)-31-776-3119 82)-31-776-2200
Website	www.ktmeng.com	E-mail	ktme@ktme.com
Address	13207, 124, Sagimakgol-ro, Jungwon-gu, Seongnam-si, Gyeonggi-do, Republic of Korea		
Company Introduction	In order to secure competitiveness of companies, KTM Engineering is conducting assessment and trouble shooting of problem facilities along with transfer of diagnostic technology for companies that desire to have facilities diagnosis technology or special construction companies that construct and install plants overseas.		

PCB Piezotronics & IMI Sensors, COCO-80X,
Trend Recorder, VWD, Vimonet XI

Products &
Exhibits



EXHIBITOR'S DESCRIPTIONS

BOOTH No. 24

ANK Plant Service Co.,Ltd
(Ethos Energy)



Main Exhibit Item	Introducing EthosEnergy, which provides a variety of engineering and solutions in the Power generation, Oil & Gas, Industrial, Aerospace.		
Country	South Korea		
CEO	Hyungchul An		
Contact Person	Hyungchul An		
Job Title	CEO		
TEL(Direct)	82)-61-685-0811 82)-10-4583-5251	FAX	82)-61-685-0911
Website	https://ethosenergy.com/	E-mail	ankps2012@gmail.com ankps@daum.net
Address	59637, 21, Seongsan-ro, Yeosu-si, Jeollanam-do, Republic of Korea		
Company Introduction	As a sales agent for EthosEnergy, ANK offers a wide range of independent OEM approved solutions for turbine (gas and steam), compressor, generator and transformer products and services specific to your industry.		
Products & Exhibits	<ul style="list-style-type: none"> - Gas Turbine Total Services - Steam Turbines - Generators - Compressors - Transformers - Field Services - Operations and Maintenance - Supporting Services 		



BOOTH No. 25

InFaith Co., LTD.



Main Exhibit Item	Remote & Real-Time Vibration Visualization Base On-Line Monitoring Solution, Ultra-Early Friction Detection Stress Wave Monitoring Solution		
Country	South Korea		
CEO	Jutaek Chung		
Contact Person	Junghyun Cho		
Job Title	Technical Sales Manager		
TEL(Direct)	82)-31-726-1672	FAX	82)-31-726-1376
Website	www.infaith.kr	E-mail	jt@infaith.kr jhcho@infaith.kr
Address	16976, 58, Giheung-ro, Giheung-gu, Yongin-si, Gyeonggi-do, Republic of Korea		
Company Introduction	<p>Since 2000 CBM + Reliability Solution & Technical Service</p> <ul style="list-style-type: none"> * ISO 18436 Vibration Certificate Training Course from 2007 * Condition & Vibration Monitoring System Implementation * Wireless/Remote/Real Time/On-Line Technologies * Vibration Visualization Solution & Ultra Precision LASER Alignment Solution 		
Products & Exhibits	<p>Remote & Real-Time Vibration Visualization Base On-Line Monitoring Solution, Ultra-Early Friction Detection Stress Wave Monitoring Solution</p>  <p>Portable On-Line Stress Wave Measurement System MODEL : SWP 3000(SGP6)</p> <p>CURTIS-WRIGHT InFaith Co., LTD. www.infaith.kr infaith</p>		

EXHIBITOR'S DESCRIPTIONS

BOOTH No.	26	Solomon Technology Upcycling	
		 주 솔로몬테크놀러지 Surface Engineering Solutions	
Main Exhibit Item	Petrochemical Equipment Upcycling (Tailored Remanufacturing)		
Country	South Korea		
CEO	Yongcheul Han		
Contact Person	Jennifer Yao		
Job Title	Manager		
TEL(Direct)	82)-51-831-4007 82)-10-3574-9218	FAX	
Website	www.nanocoating.kr	E-mail	solomon@nanocoating.kr
Address	46754, 41, Noksansandan 261-ro 74beon-gil, Gangseo-gu, Busan, Republic of Korea		
Company Introduction	Surface Engineering Specialist 1. Used Equipment Reuse 2. Anti-Corrosion/Erosion/Fouling 3. Reverse Engineering by New Materials & New Technologies		
Products & Exhibits	1. Turbomachinery 2. Graphene H-ex & Reactor 3. Bolting Service 4. Upcycling Valve & Pipe Line		
			

BOOTH No.	27	Turbomachinery Laboratory at Texas A&M University	
		 TEXAS A&M ENGINEERING EXPERIMENT STATION	
Main Exhibit Item	Research consortiums, national and international symposia, and research grants.		
Country	United States		
CEO	Dr. Eric Petersen		
Contact Person	Kristen Clayton		
Job Title	Communications Manager		
TEL(Direct)	1)-979-458-9897	FAX	
Website	turbolab.tamu.edu	E-mail	klc-88@tamu.edu
Address	1485 George Bush Dr. West, 3254 TAMU, College Station, TX 77845		
Company Introduction	The Texas A&M Turbomachinery Laboratory conducts grantbased research to enhance the reliability and performance of rotating machinery. The Lab also organizes global conferences for turbomachinery and pump professionals, providing continuing education opportunities and fostering industry-wide collaborations and connections. With a focus on theoretical and applied studies, the Lab's work encourages lifelong learning and facilitates groundbreaking research in the field.		
Products & Exhibits	Research consortiums, national and international symposia, and research grants.		
			

동력전달장치(커플링, 클러치)의 모든 것!

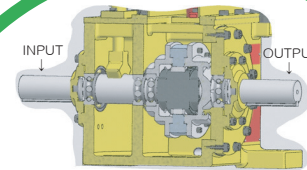
Condition monitoring and protection solutions brief

Ameriflex 다이어프램 커플링(API671)

- 다이어프램은 낮은 무게 대비 높은 토크
- 분리된 다중 나선형 다이어프램
 - 싱글 다이어프램보다 매우 우수
 - 최고의 유연성, 안전성과 피로강도
 - 응력부식 저항 우수



Ameridrives

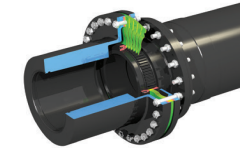


Marland Clutch

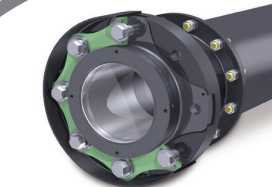


CECON 클러치

- 중단없이 연속운전 가능
- 영구적인 수명, 높은 신뢰성, 최소 유지보수
- 별도 냉각장치 불필요(냉각탑이 기본 구성)
- 수동 브레이크
- 윤활은 하우징내에서 자급식
- 윤활유의 자가순환(self-circulating), 자가여과(self-filtering)



Bibby Turboflex

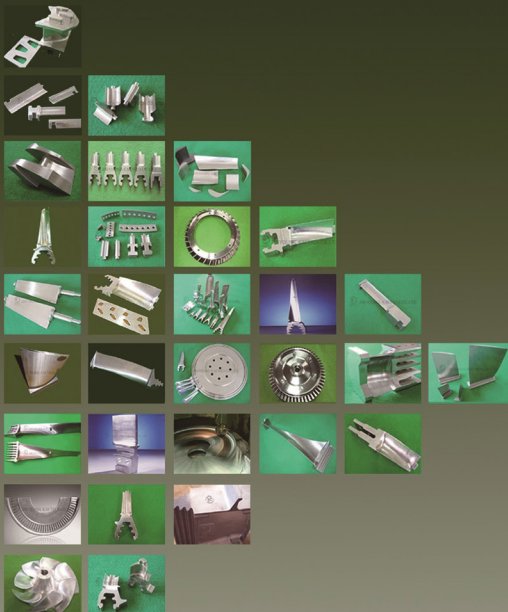


Turboflex Plus 디스크 커플링(API610/671)

- 강력한 디스크팩으로 무게 대비 높은 토크
- 고성능, 경제적인 커플링
- ISO 14691 / 10441
- ATEX 기본 조건(불꽃방지 소재)

터빈 블레이드/다이아프램의 모든 것

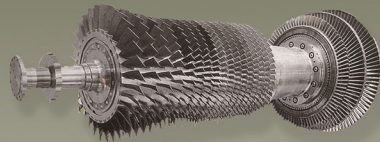
All of Turbine Blade, Diaphragm for GT & ST



- Gas Turbine
Compressor Blade
IGV / OGV / Vane
- Steam Turbine
Rotating / Moving / Rotor Blade
Stationary / Fixed / Stator Blade
Nozzle / Diaphragm
- Turbo Machinery
Blisk / Impeller

◆ Application

- POWER GENERATION
Nuclear / Thermal / Hydro
Combined Cycle / IGCC
Co-Generation System
FWPT / BFPT
- MARINE & PUMP
COPT / WBPT
Propulsion
- AEROSPACE
Commercial
Military



■ 항공용(Aeronautical)

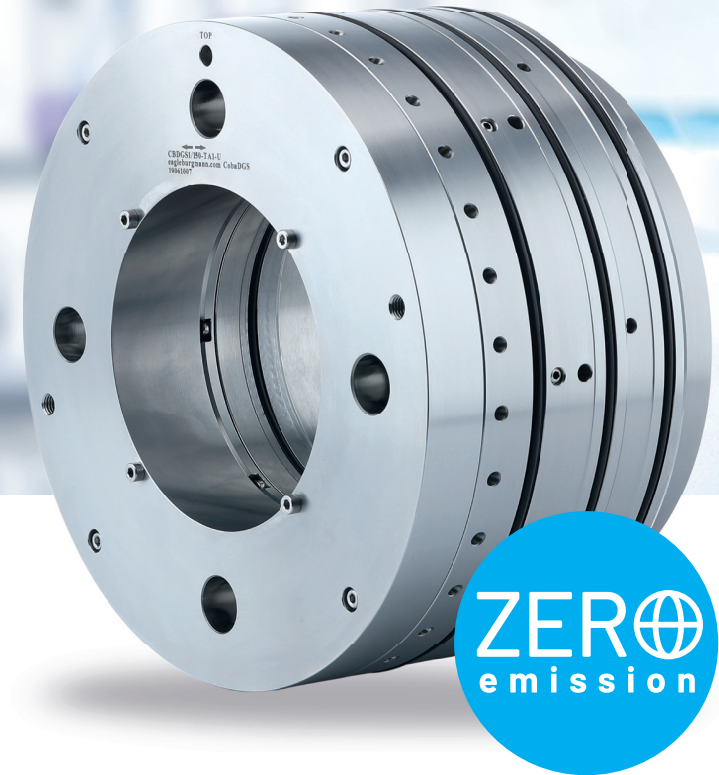
■ PARTNERS



진영 TBX(주) 501, Namyeon-ro, Seongsan-gu, Changwon-si, Gyeongsangnam-do, 51528, Korea
www.Blade-Korea.com blade@tbx.co.kr +82-55-293-0477

RELY ON EXCELLENCE

CobaDGS - Zero emission solution. Extremely robust and safe.



eagleburgmann.com

FSE KOREA 에프에스이 코리아(주)
TURBO AIR COMPRESSOR

서울시 강동구 고덕로 133, 404호
Tel 02-3427-2570
Fax 02-3427-2573
www.fsekorea.com

에프에스이코리아(주)는

FS-Elliott Turbo Air Compressor & Bauer 고압 Compressor를 판매하는 공식 대리점입니다.



FS-Elliott
Turbo Air Compressor
Package 공급

Spare Parts 공급
& 철저한 A/S와 시운전

Plant Air System 설계
(Turbo, Screw & Dryer)



Polaris Compressor
- P300 ~ P700
(250 ~ 3,000HP)

BAUER
KOMPRESSOREN

Quality. Our DNA

호흡용 공기 공급
(소방, 다이빙, 군사 및 항공)

산업용 응용
(누출 감지 & 압력 테스트)

재생 에너지 / 의료



〈표준형 고압 공기 충전기〉
- 350 bar

〈프리미엄 고압 공기 충전기〉
- 350 bar

〈이동식 컴프레서〉
- 330 bar

연회 및 숙박안내

연회 일정	Day 1	11월 14일(목)
	오찬	12:00~12:45, 에뿌제, 3F
	환영만찬	18:30~20:30, 에뿌제, 3F
		- 협회장 환영사 - 후원법인 및 협찬사 소개 - 참가업체 소개 - 임원 소개 - 저녁식사 및 교제시간 - 공연 - 2차 친선교류 (장소이동)
Day 2	11월 15일(금)	
	오찬	12:00~13:00, 에뿌제, 3F
주차	등록데스크에서 주차 등록 요청바랍니다	
숙박안내	선착순 프로모션 객실(11월 13일-15일)이 예약되어 있으니 숙박을 원하시는 분은 사무국에서 예약 요청서를 받아 신라스테이 여수(yesu.reserve@shillastay.com)에 제출하여 개별 예약을 해주시기 바랍니다. (문의 시 행사명(KRMS2024 또는 회전기계 심포지엄)을 언급해주시기 바랍니다).	
	호텔	유탕 마리나 호텔(도보 10분) - http://www.utopmarina.com/ 베네치아 호텔(도보 10분) - http://www.yeosuvenezia.com 소노캄 여수(도보 20분) - https://www.sonohotelsresorts.com/yeosu 라마다 프라자 바이 윈덤(택시 9분) - http://www.ramadaplazadolsanyeosu.com
	레지던스 및 모텔	여수낭만포차거리 주변 모텔 (택시 5분) 한려동 주변 모텔 (도보 10분)

KOREA 회전기계심포지엄 사무국

T. 02.515.3141 F. 02.515.3108 E. krmea@krmea.or.kr www.krmea.or.kr

Banquet and Accommodation

Banquet	Day 1	Nov. 14(Thu.), 2024
	Luncheon	12:00~12:45, Epouser, 3F
	WelcomeBanquet	18:30~20:30, Epouser, 3F
		<ul style="list-style-type: none"> - Welcoming Speech - Introduce sponsors and supporters - Introduce participants - Introduce board of directors and KRMEA - Dinner and small group meeting - Special event show - After Party (Change of venue)
	Day 2	Nov. 15(Fri.), 2024
	Luncheon	12:00~13:00, Epouser, 3F
Parking	Please request parking registration at the registration desk.	
Accommodation	A limited number of promotional rooms are available on a first-come, first-served basis for November 13th-15th. If you wish to reserve a room, please obtain a reservation request form from the Secretariat and submit it to Shilla Stay Yeosu (yeosu.reserve@shillastay.com) to make your individual reservation. When inquiring, please mention the event name (KRMS2024 or Rotating Machinery Symposium).	
	Hotel	Utop Marina Hotel (10 minutes on foot) - http://www.utopmarina.com/ Venezia Hotel (10 minutes on foot) - http://www.yeosuvenezia.com Sono Calm Yeosu (20 minutes on foot) - https://www.sonohotelsresorts.com/yeosu Ramada Plaza by Wyndham (9 minutes by taxi) - http://www.ramadaplazadolsanyeosu.com
	Residence Hotel & Motel	Motels near Yeosu Nangman Pocha Street (5 minutes by taxi) Motels near Hallyeo-dong (10 minutes on foot)

KRMEA Secretariat

T. +82-2-515-3141 F. +82-2-515-3108 E. krmea@krmea.or.kr www.krmea.or.kr

개최 장소 및 교통편

여수엑스포컨벤션센터

전라남도 여수시 박람회길 1 (덕충동)

T. 1577-2012 <https://www.expo2012.kr>

- | | |
|------------|--|
| 기차 | • 여수엑스포역 하차 역 앞 횡단보도 건너 직진 (도보 약 5분 거리) |
| 버스 | <ul style="list-style-type: none"> • 여수 시외버스터미널 건너편 시내버스 이용 • 버스번호 28, 32, 33, 34, 35, 80, 82, 83, 87, 88, 333, 555, 666
동초등학교 버스정류장 하차 도보 이동 (13분) |
| 비행기 | <ul style="list-style-type: none"> • 여수 공항 건너편 산곡정류장(마전 방면) 시내버스 이용 • 버스번호 31, 32, 33, 34, 35, 330
동초등학교 버스정류장 하차 도보 이동 (13분) |
| 자가용 | <ul style="list-style-type: none"> • 전남 여수시 박람회길 1
주차장 : 국제관 B동, 국제관 A동, 아쿠아리움 입구 주차장 |

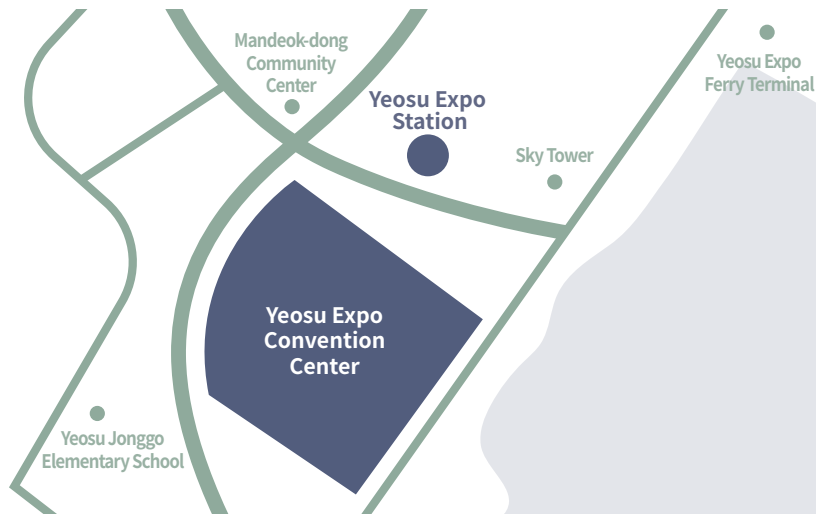


Venue and Transportations

Yeosu Expo Convention Center

1, Expo Road, Yeosu-si, Jeollanam-do (Deokchung-dong)
T. +82-1577-2012 <https://www.expo2012.kr>

- | | |
|--------------------|---|
| Train | <ul style="list-style-type: none"> Get off at Yeosu Expo Station Cross the crosswalk in front of the station and go straight (about 5 minutes on foot) |
| Bus | <ul style="list-style-type: none"> Take the city bus across from Yeosu Intercity Bus Terminal Bus Number 28, 32, 33, 34, 35, 80, 82, 83, 87, 88, 333, 555, 666 Get off at Dong Elementary School bus stop Walking distance (13 min) |
| Airplane | <ul style="list-style-type: none"> Take the city bus from Sangok Bus Stop (Majeon direction) across from Yeosu Airport Bus Number 31, 32, 33, 34, 35, 330 Get off at Dong Elementary School bus stop Walking distance (13 min) |
| Private car | <ul style="list-style-type: none"> Parking lot at 1 Expo Road, Yeosu-si, Jeollanam-do : International Hall B Building, International Hall A Building, Aquarium entrance parking lot |



공식후원사 및 협찬사 / OFFICIAL SPONSORS AND SUPPORTERS

Official Sponsors



Special Supporter



Promotional Gift Supporter



공식후원사 및 협찬사 / OFFICIAL SPONSORS AND SUPPORTERS

Official Supporters

Platinum Supporters



Gold Supporters



Silver Supporters



Bronze Supporters



OFFICIAL SUPPORTERS

Platinum Supporters



Company	Ebara Elliott Energy		
CEO	Takanobu Miyaki		
Country	Singapore		
Address	(Zip code 609933) INTERNATIONAL BUSINESS PARK,07-01, SINGAPORE 609933		
Contact Person	Yik Fei Chew		
TEL(Direct)	65)-9772-4698	FAX	65)-6563-1387
Website	www.elliott-turbo.com	E-mail	ycheu@elliott-turbo.com sales-eles@elliott-turbo.com

About Company

Ebara Elliott Energy provides a range of products, including centrifugal compressors, steam turbines, power recovery expanders, custom pumps, and cryogenic pumps and expanders. We offers complete global service packages including parts, repairs, emergency response, scheduled outages, modifications & service engineering.

OFFICIAL SUPPORTERS

Platinum Supporters



Company	Dongyang Chemical Pump Co., Ltd.		
CEO	Kiyoung Ha		
Country	South Korea		
Address	(Zip Code 10832) 119, Donyu2-ro, Munsan-eup, Paju-si, Gyeonggi-do, Republic of Korea		
Contact Person	Youjung Shim		
TEL(Direct)	82)-31-929-9797 82)-31-977-5161	FAX	82)-31-935-3930
Website	www.dycp.co.kr	E-mail	business@dycp.co.kr shimyou66@dycp.co.kr

About Company

The best products and services are created by the technology of DYCP and the value generated for customers shines ever more brightly. DYCP is attracting attention in markets both Korea and abroad, and has grown by being strictly centered on customers and their needs. DYCP is equipped with world-class expertise in the field of pumps that are widely used in the plant industry, competing by offering optimal products and services. DYCP constantly pursues investment in differentiated technology in order to enhance customer value.

Platinum Supporters



Company	TAESAN Rotatment Corp.		
CEO	Seungpan Ko		
Country	South Korea		
Address	(Zip code 06779) 1st Floor, 23, Dongsan-ro, Seocho-gu, Seoul, Republic of Korea		
Contact Person	Jintae Woo		
TEL(Direct)	82)-2-579-6271	FAX	82)-2-579-6273
Website	https://www.taesan21.co.kr/	E-mail	taesan@taesan21.co.kr

About Company

One stop total solution provider! Taesan Rotatement specializes in refinery and petrochemical rotating machinery such as Reciprocating Compressor, Centrifugal Compressor, Gas turbine, Air fin cooler and Pump, etc. We are capable of sales, supply, field service, machining and repair, manufacturing, modification, technical support and training. Taesan is powered by your happiness!

OFFICIAL SUPPORTERS

Gold Supporters



Company	ANK Plant Service Co.,Ltd (Ethos Energy)		
CEO	Hyungchul Ahn		
Country	South Korea		
Address	(Zip Code 59637) 21, Seongsan-ro, Yeosu-si, Jeollanam-do, Republic of Korea		
Contact Person	Hyungchul An		
TEL(Direct)	82)-61-685-0811	FAX	82)-61-685-0911
Website	https://ethosenergy.com/	E-mail	ankps2012@gmail.com mail@ankkorea.com ankps@daum.net
About Company	As a sales agent for EthosEnergy, ANK PLANT SERVICE offers a wide range of independent OEM approved solutions for turbine (gas and steam), compressor, generator and transformer products and services specific to your industry.		

Gold Supporters



Company	Flowserve KSM Co.,Ltd		
CEO	Yunho Kim / John H Kim		
Country	South Korea		
Address	(Zip code 10040) 71, Sorae-ro, Daegot-myeon, Gimpo-si, Gyeonggi-do, Republic of Korea		
Contact Person	Minjea Kim		
TEL(Direct)	82)-31-980-0216	FAX	-
Website	https://www.ksm.co.kr/intro.php	E-mail	minjea@Flowserveksm.co.kr
About Company	<p>Since our establishment in 1979, we have differentiated ourselves through continuous improvements and research and development in the fields of mechanical seals, auxiliary devices and seal oil systems.</p> <p>Over the last 45 years, Flowserve KSM Co., Ltd. has utilized our core technology to become a Global-Class sealing technology company. We have established the world's best quality management system and production capacity, and secured the position of a global leader in the mechanical seal industry by responding flexibly to all product requirements from our customers.</p>		

OFFICIAL SUPPORTERS

Gold Supporters



Company	Hannarae International Co., Ltd		
CEO	Byunghak Ahn		
Country	South Korea		
Address	(Zip Code 06150) 329, Teheran-ro, Gangnam-gu, Seoul, Republic of Korea		
Contact Person	Byunghak Ahn		
TEL(Direct)	82)-2-561-7800	FAX	82)-2-564-7300
Website	-	E-mail	hannaco@hnrltd.com
About Company	We are the exclusive sales distributor of the world best quality pump supplier, Flowserve Pump (IDP, Niigata Worthington, Ingersoll-Rand, Durco, Pacific, Byron Jackson and United Brand) for Petrochemical, Refinery.		

Gold Supporters



Company	HYOSUNG GOODSPINGS INC.		
CEO	HYOSUNG GOODSPINGS INC.		
Country	South Korea		
Address	(Zip code 04144) 119, Mapo-daero, Mapo-gu, Seoul, Republic of Korea		
Contact Person	Daemyung Moon		
TEL(Direct)	82)-2-3279-8291	FAX	82)-2-3279-8329
Website	https://www.hsgoodsprings.com/	E-mail	moon7@hyosung.com
About Company	HYOSUNG GOODSPRINGS manufactures full series of pumps in accordance with API standards satisfying diverse range of service conditions required from global oil and gas companies. More than 50 years of experience in the Pump Industry, the innovative force of skilled experts as well as continuous research and development are the basis of our competitiveness. We have a long-term relationship with global major companies such as Saudi Aramco, SABIC, KNPC, Chevron-Phillips, Exxon Mobile and Gazprom, by supplying pumps optimized to the customer's specific service conditions and requirements.		

OFFICIAL SUPPORTERS

Gold Supporters



Company	NEUMAN & ESSER		
CEO	Arnd Viets, Luca cini		
Country	Germany		
Address	(Zip Code 51020) 56, Yulha 6-ro, Gimhae-si, Gyeongsangnam-do, Republic of Korea		
Contact Person	Junchul Hwang		
TEL(Direct)	82)-10-5285-9166	FAX	82)-55-904-1831
Website	https://neuman-esser.de/en	E-mail	Junchul.hwang@neuman-esser.com
About Company	<p>We stand as the industry's reliable partner, propelling the energy transition and the circular economy through its integrated solutions for the energy infrastructure of tomorrow. Our compressor solutions with in-house sealing technology are utilized extensively. Catering to the traditional oil and gas industry, as well as the emerging hydrogen economy and green gas industry.</p>		

Silver Supporters



Company	Bently Nevada LLC		
CEO	Yarlagadda, Aravind		
Country	USA		
Address	(Zip code 89423) 1631 Bently Parkway South, Minden, Nevada USA 89423		
Contact Person	Dongsub Lee		
TEL(Direct)	82)-61-691-4902	FAX	82)-61-810-691-4904
Website	https://www.bakerhughes.com/bently-nevada	E-mail	dongsub.lee@bakerhughes.com
About Company	<p>Asset protection and condition monitoring</p> <p>To operate safely and reliably, industries depend on actionable information. Bently Nevada systems and services from Baker Hughes are designed to help our customers Increase safety, optimize operations, protect their production assets, have less downtime, avoid unplanned events, and schedule condition-based maintenance.</p> <p>Over 60 years of Innovation means that Bently Nevada engineers and service teams provide an unmatched depth of expertise. Our products, software, and people provide focused, plant-wide solutions to customers in over 140 countries, a truly global reach.</p> <p>The company was founded by Don Bently, a pioneer in the condition monitoring industry. Bently Nevada employs over 1,400 people worldwide and is headquartered in Minden, Nevada near lake Tahoe, three hours east of San Francisco.</p>		

OFFICIAL SUPPORTERS

Silver Supporters



Company	HIGH POWER TECHNICAL CO.,LTD.		
CEO	Sookon Kim		
Country	South Korea		
Address	(Zip Code 08639) 97, Siheung-daero, Geumcheon-gu, Seoul, Republic of Korea		
Contact Person	Jaeheon Jeong		
TEL(Direct)	82)-2-804-0150	FAX	82)-2-806-4883
Website	http://www.hpt.co.kr	E-mail	hpt100@naver.com
About Company	<p>Since its founding in January 1988, High Power Technical Co., Ltd. has supplied excellent products necessary for the operation of domestic rotating machinery through the production and sales of couplings, a power transmission device.</p> <p>We exclusively import High Performance Engineered Couplings produced by Bibby Transmissions in the UK, America's Ameridrives and TB Wood's of Altra Group and also import Disc Brakes produced by Twiflex Ltd. in the UK. Through this exclusive agent contract, our company can provide excellent products with advanced technology to all power plants in Korea, as well as equipment industries in the steel, cement, and petrochemical industries, and fluid machinery companies that produce pumps, fans, etc.</p> <p>Above all, based on the trust that we have earned by satisfaction from the mechanical engineers over several decades through the special specifications and accumulated technology, we have participated in the Korea Rotating Machinery Symposium organized by KRMEA since November 2012 and introduced the products we produce and import.</p>		

Silver Supporters



Company	JINYOUNG TBX CO.,LTD		
CEO	Joonseob Kim		
Country	South Korea		
Address	(Zip code 51528) 501, Nammyeon-ro, Seongsan-gu, Changwon-si, Gyeongsangnam-do, Republic of Korea		
Contact Person	Seoyeong Hong		
TEL(Direct)	82)-10-9909-9283	FAX	82)-55-255-4937
Website	http://www.blade-korea.com/	E-mail	blade@tbx.co.kr syhong@tbx.co.kr
About Company	<p>Since its establishment in 1982, Jinyoung TBX Co., Ltd. has been producing turbine blades, which are the core components of power generation facilities, since the late 1980s, and has been praised by the world's leading makers for its success in developing and mass-producing blades that relied on imports.</p>		

OFFICIAL SUPPORTERS

Bronze Supporters



Company	EagleBurgmann		
CEO	Steven Paul Ryder		
Country	South Korea		
Address	(Zip Code 18103) 28-77, Gajangsaneopdong-ro, Osan-si, Gyeonggi-do, Republic of Korea		
Contact Person	Jerry Kim		
TEL(Direct)	82)-10-8804-2911 82)-31-375-4095	FAX	-
Website	www.eagleburgmann.com	E-mail	jerry.kim@kr.eagleburgmann.com
About Company	EagleBurgmann is one of the leading providers of industrial sealing technology on the international stage. Our products and comprehensive services are used wherever the key requirements are reliability and safety.		

Bronze Supporters



Company	FSE Korea Co., Ltd.		
CEO	Seunghwan Lim		
Country	South Korea		
Address	(Zip code 05236) 133, Godeok-ro, Gangdong-gu, Seoul, Republic of Korea		
Contact Person	Jiho Lim		
TEL(Direct)	82)-2-3427-2570	FAX	82)-2-3427-2573
Website	www.fsekorea.com	E-mail	sales@fsekorea.com sswhan@fsekorea.com
About Company	FS-Elliott's Oil Free, centrifugal air has led the industry with a technologically advanced design that delivers reliable, trouble-free operation with the lowest cost of ownership. Offering a horsepower range of 250 to 5000. Our compressors are ideally suited to a broad range of industries. Bauer Kompressoren GmbH, founded in 1946 and based in Munich, Germany, is a global leader in high-pressure compression systems. Specializing in piston compressors, Bauer serves various industries such as diving, fire and safety, industrial applications, defense, and maritime. Its advanced technology ensures reliable and efficient high-pressure air and gas systems, capable of handling pressures up to 500 bar (7250 psi) and beyond.		

OFFICIAL SUPPORTERS

Bronze Supporters



Company	InFaith Co., LTD.		
CEO	Jutaek Chung		
Country	South Korea		
Address	(Zip Code 16976) 58, Giheung-ro, Giheung-gu, Yongin-si, Gyeonggi-do, Republic of Korea		
Contact Person	Junghyun Cho		
TEL(Direct)	82)-31-726-1672	FAX	82)-31-726-1376
Website	www.infaith.kr	E-mail	jt@infaith.kr

About Company

Since 2000
 CBM + Reliability Solution & Technical Service
 * ISO 18436 Vibration Certificate Training Course from 2007
 * Condition & Vibration Monitoring System Implementation
 * Wireless/Remote/Real Time/On-Line Technologies
 * Vibration Visualization Solution & Ultra Precision LASER Alignment Solution

Bronze Supporters



Company	MAN Energy Solutions Korea Ltd.		
CEO	Rasmussen Tommy Rene		
Country	South Korea		
Address	(Zip code 46727) 51, Beombang 2-ro, Gangseo-gu, Busan, Republic of Korea		
Contact Person	Kwangyoung Heo		
TEL(Direct)	82)-51-440-0266	FAX	82)-51-988-4004
Website	www.man-es.com	E-mail	kwangyoung.heo@man-es.com

About Company

Since 1758, MAN Energy Solutions, has been leading the large diesel & gas engine and turbomachinery market, experiencing a historical high-points in diverse industries over the world, with the invention of diesel engine and the cutting-edge turbomachinery technology for over 260 years which enables our customers to achieve sustainable value creation in the transition towards a carbon-neutral future, and it will be continued to transform energy into concrete benefits for economic and our environment with ammonia/methanol fueled engine, CO2 compression and heat pump technology and innovative engineering solutions.

OFFICIAL SUPPORTERS

Bronze Supporters



Company	Metrix Instrument Co.		
CEO	Scott Breeding		
Country	USA		
Address	(Zip Code 77064) 8824 Fallbrook Dr. Houston TX 77064		
Contact Person	Sally Shim		
TEL(Direct)	82)-10-7149-5571	FAX	82)-70-7614-3588
Website	www.Metrixvibration.com	E-mail	sungwon.shim@metrixvibration.com

About Company

Metrix is an experienced leader in the condition monitoring and asset protection industry. For more than 55 years, Metrix has been the preferred supplier of industrial vibration monitoring systems to many of the world's leading manufacturers and users of pumps, motors, fans, cooling towers, gas turbines, generators, centrifugal and reciprocating compressors, and other rotating and reciprocating machinery. With headquarters in Houston, Texas, we operate in more than 65 countries via factory-direct sales, along with a strategic network of instrumentation partners.

Bronze Supporters



Company	MITSUBISHI HEAVY INDUSTRIES COMPRESSOR CORPORATION		
CEO	Satoshi Hoshi		
Country	Japan		
Address	(Zip code 733-8553) 4-6-22, Kan-on-shin-machi, Nishi-ku, Hiroshima, Japan		
Contact Person	Keiji Tagawa		
TEL(Direct)	81)-80-2928-4257	FAX	81)-82-291-2200
Website	https://www.mhi.com/group/mco/	E-mail	keiji.tagawa.qv@mhi.com

About Company

Our compressors and turbines are used in a broad range of fields, ranging from the energy to petrochemical fields, which support the infrastructure of society.



Meet PrimeServ Omnicare

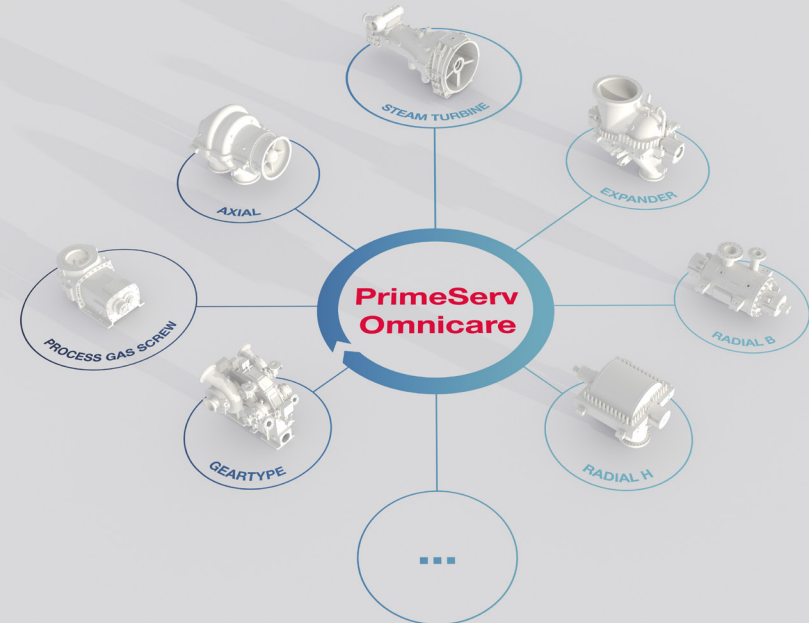
For compressors, turbines, and pumps

WIRELESS 3축 진동 및 표면 온도 백요리 내장 - 배터리 5년 수명 - WiFi 통신 플러우로 OR 서버 구축 OR 서버 시스템 인터페이스	VISUALIZATION 실시간 진동 시각화 ODS 100% 비 접촉 측정 - 설치 구조물, 베어링, 시일링, 비 동양상+진동 데이터+베어링+캐비티+연조+일고리용 휴대용 3D 모니터링 시스템	LASER GEOMETRIC MEASUREMENT SHAFT ALIGNMENT ROLL/PULLEY ALIGNMENT	ISO VIBRATION CERTIFICATION ISO 18436 진동 기술 교육 국제 자격 취득 CAT1-B-IV
---	--	---	---



Since 2000

(주)인페이스 031-726-1672 www.infaith.kr



저희 MAN Energy Solutions의 옴니케어 서비스는 기계 제작사에 상관없이 고객이 운용하시는 모든 회전 기계에 대하여, 각종 엔지니어링 서비스를 제공합니다.

- 효율 증대 및 운전 최적화
- 에너지 절감
- 수명연장
- 스페어 파트 공급
- Troubleshooting

MAN Energy Solutions Korea Ltd.

51, Beombang 2-ro, Gangseo-gu,
Busan, South Korea 46727
P +82 51 440 0265
F +82 51 988 4004
Turbo-NEA@man-es.com
www.man-es.com

Omicare Sales Manager

조재한 책임
Mr. Jae-Han Jo
P +82 51 440 0269
M +82 10 2517 5178
Jaehan.Jo@man-es.com





VIBRATION MONITORING MADE EASY

Complete Vibration Monitoring Solutions

Metrix has been providing machinery vibration monitoring solutions for more than 55 years.

Proactive maintenance enabled through world class monitoring.



DATAWATCH IX
Vibration Monitor/Recorder



SW5484E
Compact Switch



SW5580 Smart
Vibration Switch



HI-903
Hardy Shaker



MX2034
Proximity Transmitter



ST6900 Vibration
Transmitter

metrixvibration.com
+82.10.7149.5571

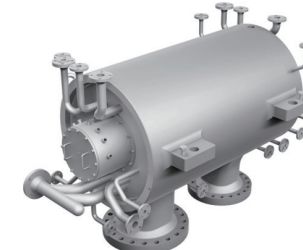
MITSUBISHI CO₂ Compressors Contributing to Building the CCUS Value Chain

Mitsubishi Heavy Industries Compressor Corporation (MCO) offers two product lines for CO₂ compression: in-line/between bearing (**MAC**) and multi-shaft/multi-stage, also referred to as integrally geared (**MAC-G**). With a track record of supplying over 100 units for CO₂ service since the 1990's, MCO is well-equipped to provide the best-suited CO₂ compressors for customers' projects.

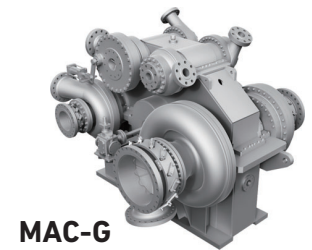


Horizontal split type

MAC

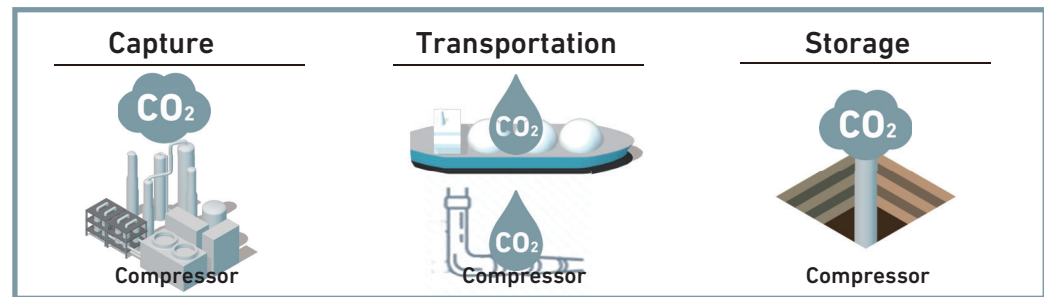


Vertical split type



MAC-G

CO₂ Capture, Utilization and Storage





CALL FOR PAPER

제 24회 KOREA 회전기계 설비보전 심포지엄

금년 심포지엄에 힘입어 2025년 11월, 제 24회 KOREA 회전기계 설비보전 심포지엄을 개최할 예정입니다.

저희 대한회전기계엔지니어협회는 매 심포지엄마다 양질의 논문 발표를 통하여 질적 성장을 이룩하였습니다. 내년에도 여러분의 우수한 논문 투고를 부탁드립니다.

모집분야

- Trouble Shooting Experience
- Reliability and Availability
- Enhancement
- Design & Engineering of Rotating Equipment
- Energy Saving
- Maintenance
- Revamping Case Studies
- Operation & Controls
- Vibration & Pulsation
- Materials & Corrosion
- Acceptance and Test Methods
- Environmental Conversation
- Diagnostics & Monitoring
- Fluid Mechanics & Thermodynamics

신청 마감 안내

초록 제출 마감일 2025년 4월 30일(수)

발표 채택 통보 2025년 5월 31일(토)

신청 방법 대한회전기계협회 홈페이지
(<http://krmea.or.kr>)에서 신청

KOREA 회전기계심포지엄 사무국

T. 02.515.3141 F. 02.515.3108 E. krmea@krmea.or.kr www.krmea.or.kr

CALL FOR PAPER

24th Korea Rotating Machinery Symposium

Dear Colleagues, On behalf of the KRMEA Board Directors, we invite you to submit a paper proposal presenting your technical and innovative solutions, advancements and knowledge at the 24th Korea Rotating Machinery Symposium.

Please submit your paper proposals. Proposals will be accepted by April 2025.

Topics

- Trouble Shooting Experience
- Reliability and Availability
- Enhancement
- Design & Engineering of Rotating Equipment
- Energy Saving
- Maintenance
- Revamping Case Studies
- Operation & Controls
- Vibration & Pulsation
- Materials & Corrosion
- Acceptance and Test Methods
- Environmental Conversation
- Diagnostics & Monitoring
- Fluid Mechanics & Thermodynamics

Submitting the Papers

Submission Deadline April 30 (Wed), 2025

Notification of Acceptance May 31 (Sat), 2025

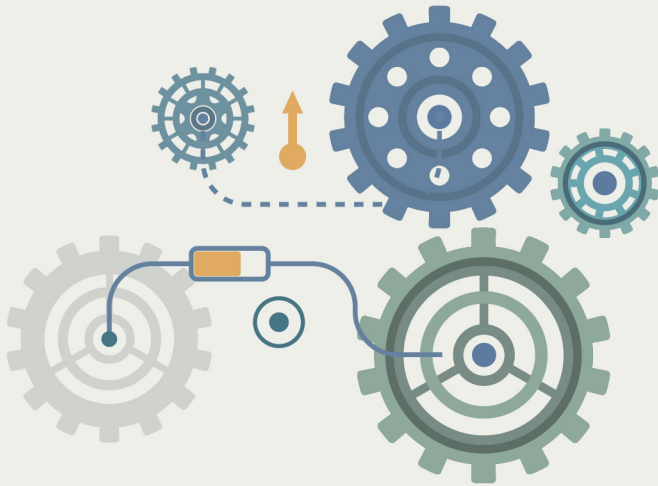
Submission Methods Summery must be submitted electronically through the Web Upload System only. (<http://krmea.or.kr>) Faxed or mailed submissions will not be accepted.

KRMEA Secretariat

T. +82-2-515-3141 F. +82-2-515-3108 E. krmea@krmea.or.kr www.krmea.or.kr

The 23rd Korea
Rotating Machinery Symposium





(사)대한회전기계엔지니어협회

KOREA ROTATING MACHINERY ENGINEERS ASSOCIATION